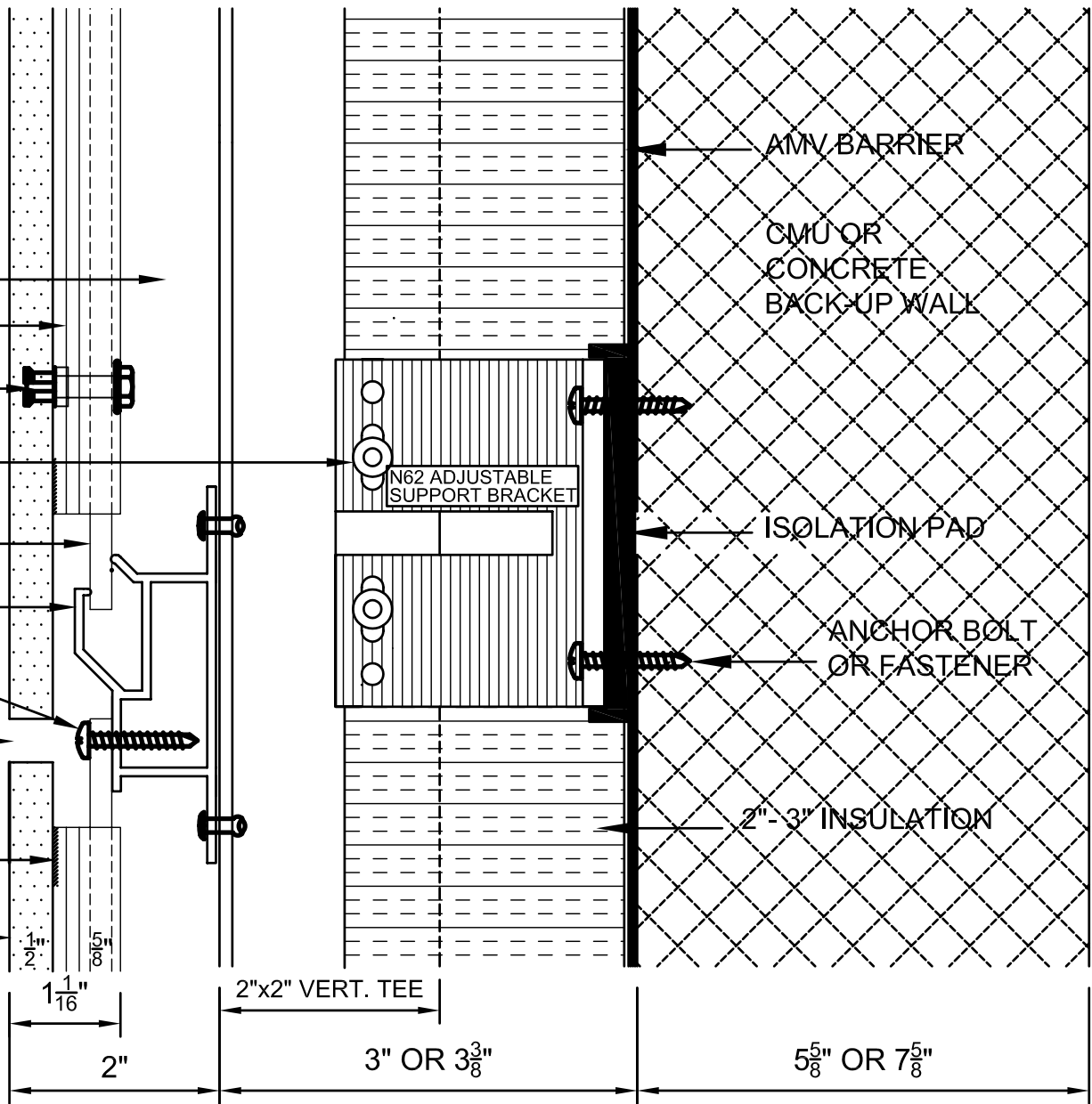


AIR SPACE  
 OUTER STRAP-D PROFILE  
 CONCEALED KEIL ANCHOR  
 FASTENER OR RIVET  
 INNER STRAP-C PROFILE  
 HORIZONTAL BX CHANNEL  
 SS SELF-DRILL SCREW  
 -PAINT TO MATCH FRAME  
 $\frac{5}{16}$ " -  $\frac{1}{2}$ " JOINT  
 COMPRESSION PAD  
 $\frac{1}{2}$ " PORCELAIN STONE



USE  $3\frac{3}{8}$ " TO CREATE 11" OR 13"  
 OVERALL WALL DIMENSION WITH CMU



**CROSSVILLE-SHACKERLEY**  
 SURECLAD PORCELAIN STONE  
 VENTILATED FAÇADE

TITLE

SECTION CMU BACK UP WITH 2x2 TEE - 2" TO 3" INSULATION

REV. DATE

MAY 1, 2013



DWG. NO.

AS-B-01/042