

CrossValue

Program Details



CROSSVALUE

Readily Available
Budget-Priced
Solutions



CROSSVILLE®

crossvilleinc.com

CROSSVALUE

Readily Available
Budget-Priced
Solutions

The Crossville CrossValue Program is a curated collection of our best selling lines that are deeply inventoried to provide our customers with readily-available, high-quality porcelain tile.



In-Stock at Our Warehouse



**Quick Order Processing
and Shipping**



Delivered to Your Door

Crossville has been a trusted source for porcelain tile for nearly four decades. Contractors, designers and retailers love our variety of unique textures, looks, colors, and installation possibilities, all backed by matchless customer service, and technical support.

Crossville Porcelain Tile Special Features and Benefits



Made in
the USA



Hypoallergenic



Mold-
resistant



Stain-
resistant



Easy to
clean



Versatile



Waterproof*



Anti-slip
options



Scratch-
resistant



Exterior
options

*Porcelain tile itself is water resistant;
for a fully waterproof installation,
please work with your installer.

The CrossValue program consists of 62 budget friendly options in 12 x 24 Unpolished at 3 budget levels - perfect to fulfill your value engineering, discretionary and specification needs.

LEVEL 1

3 collections | 9 skus | 12 x 24 UPS



Access Point Travertine p.4



Access Point Concrete p.4



Access Point Statuario p.5

LEVEL 2

5 collections | 28 skus | 12 x 24 UPS



Basalt p.6



Java Joint p.6



Gotham p.7



Stone Fiction p.7



Ready to Wear p.8

LEVEL 3

3 collections | 25 skus | 12 x 24 UPS*



Portugal p.9



Shades 2.0 p.10



Owen Stone* p.11

* Owen Stone available in Leathered finish only

Access Point - Travertine

12 x 24 UPS

- For price-conscious projects
- Calibrated edges
- Also available in 2 x 2 mosaics and 4 x 24 bullnose
- Made in USA



WBT01 Travertine White



WBT06 Travertine Ash



Wall



Floor



Counter



Exterior Walls



Pool



WBT04 Travertine Sand



WBT05 Travertine Dove

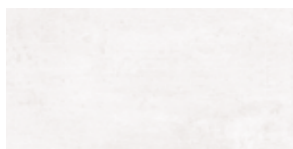


Floor: **WBT05** Access Point Travertine Dove 12 x 24

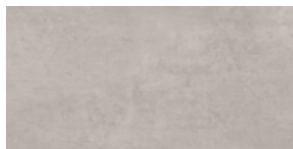
Access Point - Concrete

12 x 24 UPS

- For price-conscious projects
- Calibrated
- Also available in 2 x 2 mosaics and 4 x 24 bullnose
- Made in USA



WBC01 Concrete White



WBC06 Concrete Ash



Wall



Floor



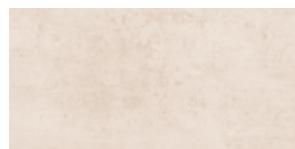
Counter



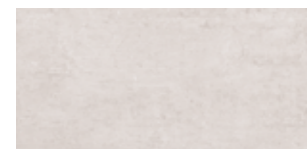
Exterior Walls



Pool



WBC04 Concrete Sand



WBC05 Concrete Dove



Floor: **WBC04** Access Point Concrete Sand 12 x 24

Access Point - Statuario

12 x 24 UPS

- For price-conscious projects
- Calibrated edges
- Also available in 2 x 2 mosaics and 4 x 24 bullnose
- Made in USA



WBS01 Statuario



Wall



Floor



Counter



Exterior Walls



Pool



Floor: **WBS01** Access Point Statuario 12 x 24

CrossValue

Level 2 Products



Basalt

12 x 24 UPS

- Inspired by genuine basalt volcanic rock with finely grained subtle undertones of crystallized magma
- Calibrated edges
- Also available in 12 x 12, 4 x 12 Bullnose and 6 x 12 Cove Base Trim
- Cross-Sheen® finish for easy cleaning
- Manufactured by Crossville® using processes that are Green SquaredSM certified
- Made in the USA



Wall



Floor



Counter



Exterior Walls



Pool



AV291 Silica



AV292 Caldera



AV293 Bedrock



AV294 Mafic



AV295 Magma



Floor: **AV295** Magma 12 x 24

Java Joint

12 x 24 UPS

- Striations of crema and bold neutrals present a product line that is steeped in versatility.
- Calibrated edges
- Also available in 4 x 24 Bullnose, 6 x 12 Cove Base Trim, and 2 x 2 Mosaic
- Cross-Sheen finish for easy cleaning
- Manufactured by Crossville using processes that are Green Squared certified
- Made in the USA



Wall



Floor



Counter



Exterior Walls



Pool



JAV01 Two Sugars



JAV02 Flat White



JAV03 House Blend



JAV04 Fresh Ground



JAV05 French Press



Floor: **JAV02** Flat White 12 x 24

Stone Fiction

- The look of travertine with the performance of porcelain
- Calibrated edges
- Also available in 24 x 24, 4 x 24 Bullnose, 6 x 12 Cove Base Trim, and 2 x 2 mosaics
- Cross-Sheen finish for easy cleaning
- Exterior Finish also available
- Manufactured by Crossville using processes that are Green Squared certified
- Made in the USA



STF01 Travertine Ivory



STF02 Travertine Beige



STF03 Travertine Silver



STF04 Travertine Coffee



Wall



Floor



Counter



Exterior Walls



Pool

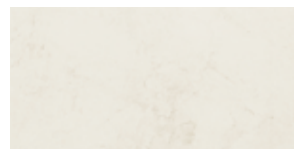


Floor: **STF01** Travertine Ivory 12 x 24 UPS

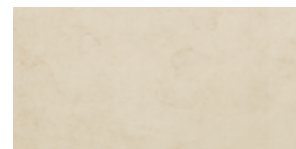
Gotham

12 x 24 UPS

- Subtle striations and aggregate finishes create depth and integrity
- Calibrated edges
- Also available in 4 x 24 Bullnose and 6 x 12 Cove Base Trim
- Cross-Sheen finish for easy cleaning
- Manufactured by Crossville using processes that are Green Squared certified
- Made in the USA



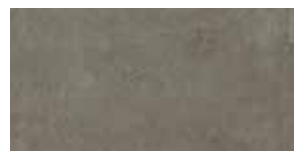
AV321 Lamp Post



AV322 Penthouse



AV323 Clock Tower



AV324 Mainline



AV325 Dockside



AV326 Pavement



Wall



Floor



Counter



Exterior Walls



Pool

Ready to Wear

12 x 24 UPS



Wall



Floor



Counter



Exterior Walls



Pool

- Patterned with classic warp and weft texture in eight smart-casual shades
- Monochromatic schemes are effortlessly chic, or mix-and-match to show your creative side
- Calibrated edges
- Also available in 4 x 24 Single Bullnose Trim
- Cross-Sheen finish for easy cleaning
- Manufactured by Crossville using processes that are Green Squared certified
- Made in the USA



Floor: **AV316** Smarty Pants 12 x 24 UPS
Wall: **AV311** Buttoned Up 2 x 6 UPS

Cools



AV312 Hand in Glove



AV316 Smarty Pants



AV314 Perfect Fit



AV317 Flannel Suit

Warms



AV311 Buttoned Up



AV315 Decked Out



AV313 Off the Cuff



AV318 Hats Off

CrossValue

Level 3 Products



Portugal

12 x 24 UPS

- Inspired by Portuguese Atlantic Dark limestone
- The six hues in Portugal's color palette are a mix of warm and cool neutrals designed to coordinate with some of our best-selling collections
- Rectified edges
- Also available in 6 x 24, 24 x 48, 4 x 24 Bullnose Trim, 6 X 12 Cove Base Trim, and 2 x 2 Mosaic
- Exterior finish also available
- Cross-Sheen finish for easy cleaning
- Manufactured by Crossville using processes that are Green Squared certified
- Made in the USA



Wall



Floor



Counter



Exterior Walls



Pool



PTG01 Velho White



PTG02 Grand Rosé



PTG03 Venho Verde



PTG04 Tinta Negra



PTG05 Harvest Tawny



PTG06 Madeira Reserve



Wall: **PTG01** Velho White 12 x 24
Floor: **PTG01** Velho White 2 x 2 Mosaic

Owen Stone

12 x 24 Leather Finish

- Unique Leathered finish offers the softest touch
- Subtle, minimalist veining
- Rectified edges
- Also available in 24 x 48, 4 x 24 Bullnose Trim, 6 x 12 Cove Base Trim, and 2 x 2 Mosaic
- Exterior finish also available
- Cross-Sheen finish for easy cleaning
- Manufactured by Crossville using processes that are Green Squared certified
- Made in the USA



Wall



Floor



Counter



Exterior Walls



Pool



OST01 Down



OST02 Bunny



OST03 Slipper



OST04 Mittens



OST05 Sable



OST06 Teddy



Floor: **OST05** Sable 12 x 24 LTR

CrossValue

Level 3 Products



Shades 2.0

12 x 24 UPS

- Our most popular Crossville collections
- Subtle biophilic linear graphics
- Rectified edges
- Also available in 6 x 24, 24 x 48, coordinating bullnose and cove base with two mosaics along with a 12x24 geometric patterned tile
- Semi-Polished and Patterned finish are also available
- Manufactured by Crossville using processes that are Green Squared certified
- Made in the USA
- Petal Certified by the International Living Future Institute



Wall



Floor



Counter



Exterior Walls



Pool

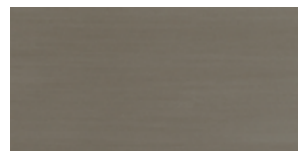
Neutral Warm



SHD43 Fog



SHD45 Clay



SHD47 Haze

New Warm



SHD51 Foam

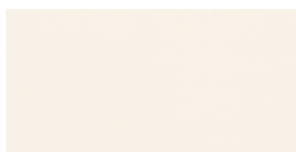


SHD52 Camel

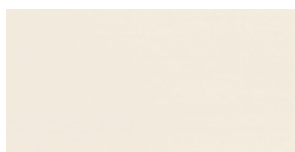


SHD53 Russet

Base



SHD41 Frost



SHD42 Vapor



SHD49 Ink



SHD54 Midnight

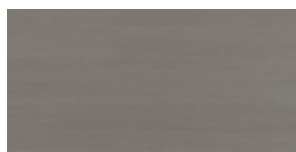
Cool



SHD44 Mist



SHD46 Ash



SHD48 Thunder



SHD43 ▶ Fog 12 x 24 UPS
SHD8 ▶ Thunder 12 x 24 UPS
SHD49 ▶ Ink 12 x 24 UPS
 Photo courtesy of Gensler

CrossValue Program

Crossville, Inc.

PO Box 1168
Crossville, TN
38557

Phone 931.484.2110
Fax 931.456.2956
E-Mail Crossc@CrossvilleInc.com
Web CrossvilleInc.com



CROSSVALUE

Readily Available
Budget-Priced
Solutions



CROSSVILLE®

crossvilleinc.com

