

Texture / Cross-Tech and Shade

Crossville Porcelain Stone®

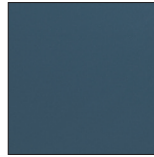
Different tile finish textures will effect a tile's recommended application, benefits and advantages, and overall look and feel. Crossville has developed a portfolio of distinctive and proprietary finish offerings (Cross-Tech) to add beauty and function to residential and commercial designs, both indoors and out.



Unpolished (UPS)

Cross-Sheen® is an integrated finish that greatly enhances the protection of Crossville tile from the majority of scuffs, stains, and even most graffiti. By creating an advanced, easier-to-clean tile surface, Cross-Sheen allows for fast removal of unsightly marks using only mild cleaner, resulting in hassle-free cleaning and long-term performance of your Crossville tile. Cross-Colors unpolished is appropriate for most interior floors and walls and exterior walls, including high-traffic areas and areas where a low level of maintenance is desired. Cross-Colors unpolished is not recommended for exterior horizontal surfaces or exterior paving.

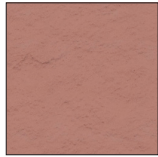
Available in our Alaska, Altered State, Argent, Basalt, Bluestone, Classic Grooves, Color Blox 2.0, Cross-Colors® Mingles, Gotham, Java Joint, Main Street, Moonstruck, Nest, Notorious, Portugal, Ready to Wear, Retro Active 2.0, Shades 2.0, SpeakEasy, State of Grace, and Stone Fiction collections



Polished (PO)

Polished Porcelain Stone® is a practical alternative to natural stone with its attractive, mirror-like finish and can be used with other surface textures to increase visual interplay and interest. Polished finish adds a look of elegance and sophistication to interior floors and interior and exterior walls. Polished finish is not recommended for wet areas where standing water may occur or for exterior horizontal and/or walking surfaces.

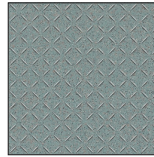
Available in our Cross-Colors® Mingles, Retro Active 2.0 and Empire collections.



Cross-Slate® (CS)

The Cross-Slate® finish combines the rustic and textured feel of slate with the through-body color and durability of Porcelain Stone® for strong commercial value where enhanced traction is needed. Cross-Slate is recommended for high-traffic interior and exterior walking surfaces in both residential and commercial environments.

Available in our Cross-Colors Mingles Collection



Cross-Tread® (CTS)

Enhanced traction and ease of maintenance make this texture a suitable choice for wet and greasy interior floor areas and exterior walking surfaces. The Cross-Tread® surface pattern is eye-catching, making it a great option for transitional areas and for use as an accent tile.

Available in our Cross-Colors Mingles Collection



Patterned (PTN)

A repeated, decorative texture or finish created for visual interplay and/or interest

Available in our Retro Active 2.0 and Shades 2.0 Collection



Honed (HON)

A uniform, semi-polished finish that results from mechanically altering the surface.

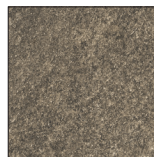
Available in our Argent, Bluestone, Moonstruck and, Notorious collections



Satin (SAT)

A smooth, semi-matte finish that results from mechanically altering the surface

Available in our State of Grace Collection



Semi-Polished (SPO)

A uniform, semi-polished finish that results from mechanically altering the surface

Available in our Shades 2.0 Collection



Textured (TX)

The rustic appearance and texture of natural slate designed for improved traction on exterior walking surfaces



Unpolished (UP)

A subtle, unaltered finish that may incorporate subtle variations in texture or gloss

Available in our Empire and Stones at Large Collection



Shade & Texture / Cross-Tech

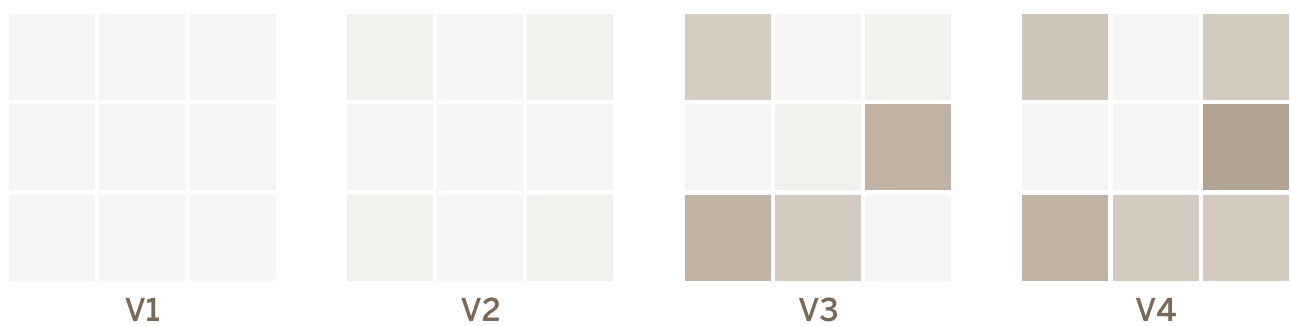
Crossville Porcelain Stone®

Crossville offers shade variations and finish textures to suit any design

Due to the innate properties of ceramic tile, the exact coloring (shade) and texture of individual tiles will vary some degree from piece to piece, and between each production run. Crossville offers tile collections with shade variations ranging from V1, Uniform Appearance, to V4, Substantial Variation, to satisfy a broad range of design needs.

These shade variations have been developed to assist you with selecting the desired look for your tile project. Whenever possible, we recommend reviewing several individual tiles from the same production run to determine acceptable shade and texture variation. Any questions or concerns about your tile selection should be clarified prior to installation.

Shade & Texture Index



V1 = Uniform Appearance	Differences among pieces from the same production run are minimal.
V2 = Slight Variation	Clearly distinguishable texture and/or pattern within similar colors.
V3 = Moderate Variation	While the colors and/or textures present on a single piece of tile will be indicative of the colors and/or textures to be expected on the other tiles, the amount of colors and/or texture on each piece may vary significantly. It is recommended that the range be viewed before selection.
V4 = Substantial Variation	Random color and/or texture differences from tile to tile, so that one tile may have totally different colors and/or textures from that on other tiles. Thus, the final installation will be unique. It is recommended that the range be viewed before selection.

Inspect products upon delivery and for best results, blend tile from several cartons during installation.

